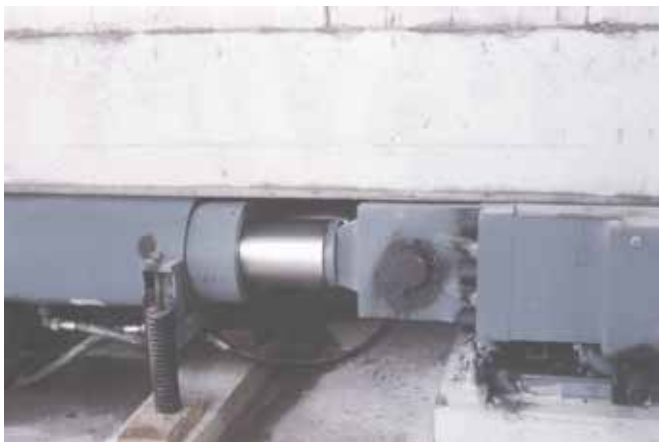




# Incrementally Launched Bridges



**MEXPRESA**



Based on the simplest concept for bridge construction -pushing a prefabricated deck from one edge of the obstacle to the opposite- the Incremental Launching System has been uninterruptedly used for large bridges from 19th through 21st Century, first with steel, then prestressed concrete, recently steel again.

Competitive application, though, requires special attention to several topics:

- Design must precisely balance material strength, superstructure depth and nose size.
- Sliding line, which includes soffit plates and bearings must be accurately designed and installed.
- Launching maneuver requires careful coordination.

MEXPRESA has a 30+ year continuous experience in this technique and can guarantee optimal results by providing the most skilled Engineers, the right Equipment (with Eberspächer hydraulics) and highly professional Site Installers.



Huixquilucan Bridge, Mexico City



Atenquique I Bridge, Mexico



Atoyac Bridge, Mexico



Martínez de la Torre Bridge, Mexico



Carlos Pellicer Bridge, Mexico City



La Marquesa Bridge, Mexico City

# Incrementally Launched Bridges Related Services Offered

Bridge Structural Design

Bridge's Construction Engineering

Sliding line supply & installation

System supply, installation & operation

Special Bearing supply & installation



**MEXPRESA**

Av Nativitas 429 • 16090 Xochimilco, CDMX • México

Tel: +(52)(55) 5334 0330

E-mail [mexpresa@mexpresa.com](mailto:mexpresa@mexpresa.com)

[www.mexpresa.com](http://www.mexpresa.com)

